

Replacing battery in Medoc Algomed



1. **Unscrew** the 2 screws of the Algometer Handle.



2. **Gently** remove the Algometer Handle and **hold** the cable carefully.



3. **Unscrew** the screws of the Algometer Chassis.

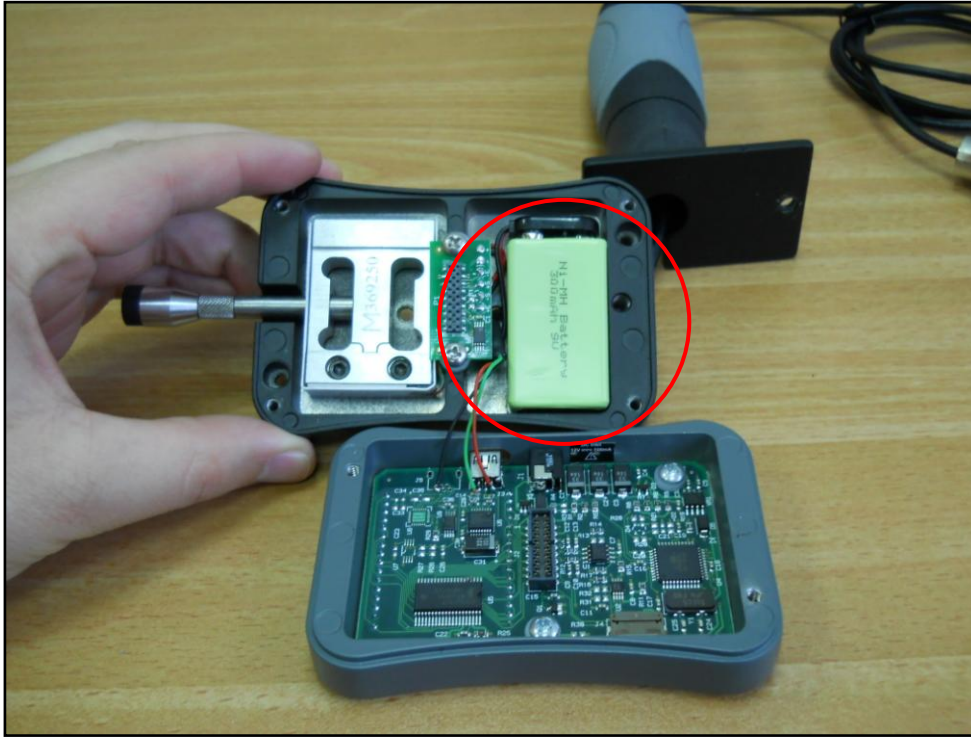


4. **Gently Open** the Algometer Chassis.



5. Remove the 9V battery from the Algometer.

Make sure not to Torn the wires



6. Replace the battery with a 9V rechargeable Battery and re- assemble the Algometer.

